

DR. BABASAHEB AMBEDKAR MARATHWADA UNIVERSITY,
AURANGABAD – 431 004, Maharashtra State (India)

NAAC – Accredited 'A'

University Science Instrumentation Centre

EPABX *: (0240) 2403399 to 400
Office *: (0240) 2403108
Registrar Office (0240) 2403333
Fax *: (0240) 2403335
Web Site *: www.bamu.ac.in



UNIVERSITY CAMPUS
AURANGABAD-431004
(Maharashtra) INDIA

QUOTATION FOR INVITATION

Ref. No. USIC/2018-19/ 311

Date: 22/01/2019.

The university invites sealed quotations for supply, installation & commissioning of two independent CCTV systems having following material and by using your own tools/instruments and manpower **as a single turnkey job**. The CCTV systems should be installed at (1) Matoshri Jijau Girls Hostel No 02 and (2) Girls Hostel No. 03 as per the locations of the items shown in the enclosed maps. **Please verify yourself the actual place of installation and actual quantity of material required.** The details are as given below.

(1) CCTV System at Matoshri Jijau Girls Hostel No 02 as per enclosed Map.

Sr. No.	Material/Work	Qty.	Make	Model No	Warranty Period
1	<p>Bullet Camera having equivalent or higher than the following specifications.</p> <p>2.4MP VF Full HD Bullet Camera- 60 Mtr.</p> <p>Image Sensor:1/2.7", 2.4 MP PS CMOS Image Sensor Minimum illumination: 0.02Lux/F1.3 30IRE,OLux IR on Shutter Speed: PAL:1/25~1/100000s, NTSC:1/30~1/100000s, S/N Ratio: More than 65dB, White Balance: Auto/Manual, Gain Control(AGC): Auto/Manual, Lens: 2.7~13.5mm Varifocal lens, Back Light Compensation: BLC/HLC/DWDR, Video Streaming:<u>25/30fps@2.4MP,25/30/50/60fps@720p</u>, Video Output: 1-channel BNC high definition video output/CVBS standard definition video output (Can switch), ICR: Auto(ICR)/Manual, IR: Range of 60 Mtr. OSD: Supports, Operating Temperature: -40C~+60C Less than 90% RH, Power Source: DC12V+/-25%, A.C. 230V through Adapter Weatherproof Standard: IP67</p>	02 Nos.			
2	<p>Dome Camera having equivalent or higher than the following specifications.</p> <p>2.4 MP VF WDR IR Dome Camera – 30 Mtr.</p>	03 Nos.			

	<p>Image Sensor: 1/2.9" 2.4MP PS CMOS</p> <p>Minimum illumination: 0.02Lux/F1.3,30IRE,OLux IR on</p> <p>Shutter Speed: PAL:1/25~1/100000s, NTSC: 1/30~1/100000s</p> <p>White Balance: Auto/Manual</p> <p>Gain Control (AGC): Auto Manual</p> <p>Lens: 2.7mm-13.5mm varifocal lens</p> <p>Back Light Compensation :</p> <p>BLC/HLC/WDR(100dB)</p> <p>S/N Ratio: More than 65dB</p> <p>Angle of view: H: 104~28 degree</p> <p>Video Streaming: <u>25/30fps@2.4MP</u>, 25/30/50/60fps@720P</p> <p>Video Output: 1-channel BNC high definition video output/CVBS video output (can switch)</p> <p>ICR: Auto (ICR)/Manual</p> <p>OSD: Multi-language</p> <p>IR: IR Range of 30 Mtr.</p> <p>Operating Temperature: -40c~+60C/Less than 90%RH</p> <p>Power Source: DC12V+/-25%, A.C. 230V through Adopter</p>					
3	<p>DVR along with 2TB Hard Disk & Mouse having equivalent or higher than the following specifications.</p> <p>8 Ch. 4MP DVR</p> <p>Protocols: HTTP,TCP/IP,iPv4/pv6,Upnp,RTSP,UDP,SMTP,NTP,DHCP,DNS,IP Filter, PPPoE, DDNS,FTP, Alarm Server, P2P,IP Search, ONVIF 2.42,CGI Conformant</p> <p>Power Supply: DC12V/2A</p> <p>Working Temp: -10~+55C/10~90%RH</p> <p>IP Camera Input: 8+4 Channel, each channel up to 5MP</p> <p>Operating System: Embedded LINUX</p> <p>Two-way Talk: Reuse audio in/out, RCA</p> <p>User interface: GUI</p> <p>Video Input: 8 channel, BNC</p> <p>Video output: 1 HDMI (up to 3840 x 2160), 1VGA</p> <p>Video Standard: NTSC(525 Line,60f/s), PAL(625Line, 50f/s)</p> <p>Compression: H.264+/H.264</p> <p>Video Resolution: 4MP,1080P,720P,960H,D1,HD1, BCIF,CIF,QCIF</p> <p>Video Recording: Main Stream: 4MP(1-15fps) 1080p/720p/960H/D1/HD1/BCIF/CIF/QCIF (1~25/30fps), Sub Stream: D1/CIF/QCIF(1~25/30fps)</p> <p>Video Display Split: 1/4/8/9/16</p> <p>Audio Input: 1 channel, RCA</p> <p>Audio Output: 1 channel, RCA</p> <p>Motion Detection: MD Zone: 396(25 x 18)</p> <p>Video Loss: Supports</p> <p>Camera Blank: Supports</p> <p>Smart Phone: IPhone, ipad, Android Phone Supports</p> <p>Hard Disk: 1 SATA port, up to 6TB</p> <p>Trigger Events: Recording, PTZ, Tour, Video push, Email, FTP, Snapshot, Buzzer and Screen Tips</p> <p>Recording Mode: Manual, Schedule (Regular, Continuous), MD (Video detection: Motion Detection, Video Loss, Tampering), Alarm, Stop</p> <p>Search Mode: Time/Date, Alarm, MD and Exact</p>	01 No.				

	Search (accurate to second) Playback: Play, Pause, Stop, Rewind, Fast play, Slow play, Slow Play, Next File, Previous File, Next Camera, Previous Camera, Full screen, Repeat, Shuffle, Backup selection, Digital Zoom Backup Mode: USB Device/Network Interface ports: 1 HDMI, 1 VGA, 1 RS485, 2 USB ports (1 USB 2.0, 1 USB 3.0) Max User Account: 128 users Record Interval: 1~60 min (default: 60min), pre- record: 1 ~ 30 sec. post-record: 10~300 Sec Ethernet: 1 RJ-45 Port(1000M) Power Source: A.C. 230V				
04	Monitor 17 inch Full HD Monitor with wall mounting kit.	01 No.			
05	DVR Rack 4U 4 U Rack with spike Guard & Exhaust Fan, lock system.	01 No.			
06	Inter connection cable and accessories RG59B/U cable Inner Conductor: 20A WG – 0.81 mm in diameter 2 stranded CCAM 18 AWG 1.02 mm power cable 95% braiding coverage Wire construction: inner conductor CCS, power wire CCA Installation on wall in PVC Casing & capping	As required for actual installation (170 Meter approximately)			

(2) CCTV System at Girls Hostel No. 03 as per enclosed Map.

Sr. No.	Material/Work	Qty.	Make	Model No.	Warranty Period
1	CCTV Bullet camera having equivalent or higher than the following specifications. 2.4MP VF Full HD Bullet Camera- 60 Mtr. Image Sensor: 1/2.7", 2.4 MP PS CMOS Image Sensor Minimum illumination: 0.02Lux/F1.3 30IRE,OLux IR on Shutter Speed: PAL:1/25~1/100000s, NTSC:1/30~1/100000s, S/N Ratio: More than 65dB, White Balance: Auto/Manual, Gain Control(AGC): Auto/Manual, Lens: 2.7~13.5mm Varifocal lens , Back Light Compensation: BLC/HLC/DWDR, Video Streaming: <u>25/30fps@2.4MP,25/30/50/60fps@720p.</u> Video Output: 1-channel BNC high definition video output/CVBS standard definition video output (Can switch), ICR: Auto(ICR)/Manual, IR: Range of 60 Mtr. OSD: Supports, Operating Temperature: -40C~+60C Less than 90% RH, Power Source: DC12V+- 25%,A.C. 230V through Adaptor Weatherproof Standard: IP67,	12 Nos.			

2	<p>CCTV Dome Camera having equivalent or higher than the following specifications. 2.4 MP VF IR Dome Camera – 30 Mtr. Image Sensor:1/ 2.9", 2.4MP PS CMOS Minimum illumination: 0.02Lux/F1.3,30IRE,OLux IR on Shutter Speed: PAL: 1/25~1/100000s, NTSC: 1/30~1/100000s White Balance: Auto/Manual Gain Control (AGC): Auto Manual Lens: 2.7mm-13.5mm varifocal lens Back Light Compensation : BLC/HLC/WDR(100dB) S/N Ratio: More than 65dB Angle of view: H: 104~28 Video Streaming: <u>25/30fps@2.4MP</u>, 25/30/50/60fps@720P Video Output: 1-channel BNC high definition video output/CVBS video output (can switch) ICR: Auto (ICR)/Manual OSD: Multi-language IR: IR Range of 30 Mtr. Operating Temperature: -40c~+60C/Less than 90%RH Power Source: DC12V+ - 25%,A.C. 230V through Adapter</p>	04 Nos.				
3	<p>CCTV Recorder with 2TB Hard disk & Mouse having equivalent or higher than the following specifications.</p> <p>8 Ch. 4MP DVR Processor: Embedded Processor IP Camera Input: 8+4 Channel, each channel up to 5MP Operating System: Embedded LINUX Two-way Talk: Reuse audio in/out, RCA User interface: GUI Video Input: 8 channel, BNC Video output: 1 HDMI (up to 3840 x 2160), 1VGA Video Standard: NTSC(525 Line,60f/s), PAL(625Line, 50f/s) Compression: H.264+/H.264 Video Resolution: 4MP,1080P,720P,960H,D1,HD1, BCIF,CIF,QCIF Video Recording: Main Stream: 4MP(1-15fps) 1080p/720p/960H/D1/HD1/BCIF/CIF/QCIF (1~25/30fps), Sub Stream: D1/CIF/QCIF(1~25/30fps) Video Display Split: 1/4/8/9/16 Audio Input: 1 channel, RCA Audio Output: 1 channel, RCA Motion Detection: MD Zone: 396(25 x 18) Video Loss: Supports Camera Blank: Supports Smart Phone: iPhone, ipad, Android Phone Supports Hard Disk: 1 SATA port, up to 6TB Trigger Events: Recording, PTZ, Tour, Video push, Email, FTP, Snapshot, Buzzer and Screen Tips Recording Mode: Manual, Schedule (Regular, Continuous), MD (Video detection: Motion Detection, Video Loss, Tampering), Alarm, Stop Search Mode: Time/Date, Alarm, MD and Exact Search (accurate to second) Playback: Play, Pause, Stop, Rewind, Fast play,</p>	02 Nos.				

	Slow play, Slow Play, Next File, Previous File, Next Camera, Previous Camera, Full screen, Repeat, Shuffle, Backup selection, Digital Zoom Backup Mode: USB Device/Network Interface ports: 1 HDMI, 1 VGA, 1 RS485, 2 USB ports (1 USB 2.0, 1 USB 3.0) Record Interval: 1~60 min (default: 60min), pre-record: 1 ~ 30 sec. post-record: 10~300 Sec Ethernet: 1 RJ-45 Port(1000M) Power Source: A.C. 230V				
4	Monitor Screen 17 inch full HD Monitor	01 No.			
5	Inter connection cable and accessories RG59B/U cable Inner Conductor: 20A WG – 0.81 mm in diameter 2 stranded CCAM 18 AWG 1.02 mm power cable 95% braiding coverage Wire construction: inner conductor CCS, power wire CCA Installation on wall in PVC Casing & capping	As required for actual installation (400 Meter (approximately))			
6	Wall Mount Rack 6U 6 U Rack with Exhaust Fan, lock system; Spike Guard.	01 No.			

Terms & Conditions.

- 1) The quantities of inter connection cables shown above are approximate and the supplier would provide quantities as actually required at the site for interconnection without imposing any extra cost.
- 2) **Warranty would be provided for one year** from the date of commissioning & scope of warranty would include all the material and services required to set right the defects in the carried out work if reported to the supplier during the warranty period.
- 3) The supplier will deposit 5% of the cost of supply/work order as performance security deposit (without carrying interest) for the period of warranty in case the cost of supply/work order exceeds Rs. 1,00,000/-
- 4) The work would be carried out during office hours at Dr. Babasaheb Ambedkar Marathwada University, Aurangabad.
- 5) The supplier would take care not to damage any infrastructure like furniture, electrical, telecommunication cables and water pipes etc. while carrying out the work. The supplier would be responsible to set-right any such damage at his own cost if occurs during installation work.
- 6) Payment shall be made by cheque after complete execution of the ordered work & its acceptance by the University for Correctness in quality & quantity.

Our total rate for Entire Material Supply as given above and Installation Work at Matoshri Jijau Girls Hostel No. 02 & Girls Hostel No. 03 as per the **enclosed maps having our sign & Seal**, inclusive of all taxes and any other charges and considering terms & conditions given herein above is Rs. _____

In Words Rs. _____

Sign & Seal of the bidder

If you are interested, please **quote your rate in the format given in the above bracket only**, inclusive of all taxes and any other charges and considering terms & conditions given therein.

Please send your quotation to, Head, USIC, Dr. Babasaheb Ambedkar Marathwada University Aurangabad **on or before 01/02/2019 up to 04:00 pm** in sealed envelope super scribed as =

“Quotation for CCTV Systems due on 01/02/2019”.

Please enclose following mandatory documents along with the sealed quotation envelope.

1. Copy/Receipt of updated Registration of Business or Shop Act License.
2. GST registration.
3. Copy of PAN card.
4. Copy of certificate of Authorized Dealer/distributor/Manufacturer/Service Provider if any.


Head

University Science Instrumentation Center (USIC),
Dr. Babasaheb Ambedkar
Marathwada University, Aurangabad

Copy to: Director, U.N.I.C. for publishing this Quotation Invitation on university's website.

DR. BABASAHEB AMBEDKAR MARATHWADA UNIVERSITY,
AURANGABAD – 431 004, Maharashtra State (India)

NAAC – Accredited ‘A’

University Science Instrumentation Centre

EPABX :- (0240) 2403399 to 400
Office :- (0240) 2403108
Registrar Office (0240) 2403333
Fax :- (0240) 2403335
Web Site :- www.bamu.ac.in



UNIVERSITY CAMPUS
AURANGABAD-431004
(Maharashtra) INDIA

Ref. No. USIC/2018-19/321

Date: 23/01/2019.

Corrigendum to Quotation Invitation Ref. No. USIC/2018-19/311 dated 22-01-2019

The university has invited sealed quotations vide **Quotation Invitation Ref. No. USIC/2018-19/311 dated 22-01-2019** for supply, installation & commissioning of two independent CCTV systems as a single turnkey job for installation at (1) Matoshri Jijau Girls Hostel No 02 and (2) Girls Hostel No. 03 as per the locations of the items shown in the enclosed maps.

The maps, Map1 and Map2, attached herein should be considered as a part of above cited Quotation Invitation.

Head

University Science Instrumentation Center (USIC),
Dr. Babasaheb Ambedkar
Marathwada University, Aurangabad

Copy to: Director, U.N.I.C. for publishing this Corrigendum to Quotation Invitation on university's website.

MAP-1

श्री जिज्ञासु निदेशार्थी वसतीगृह नं. 2

Camera System Details:-

Dome Camera = 3 Nos.

Bullet Camera = 2 Nos

DVR with 2TB = 1 Nos

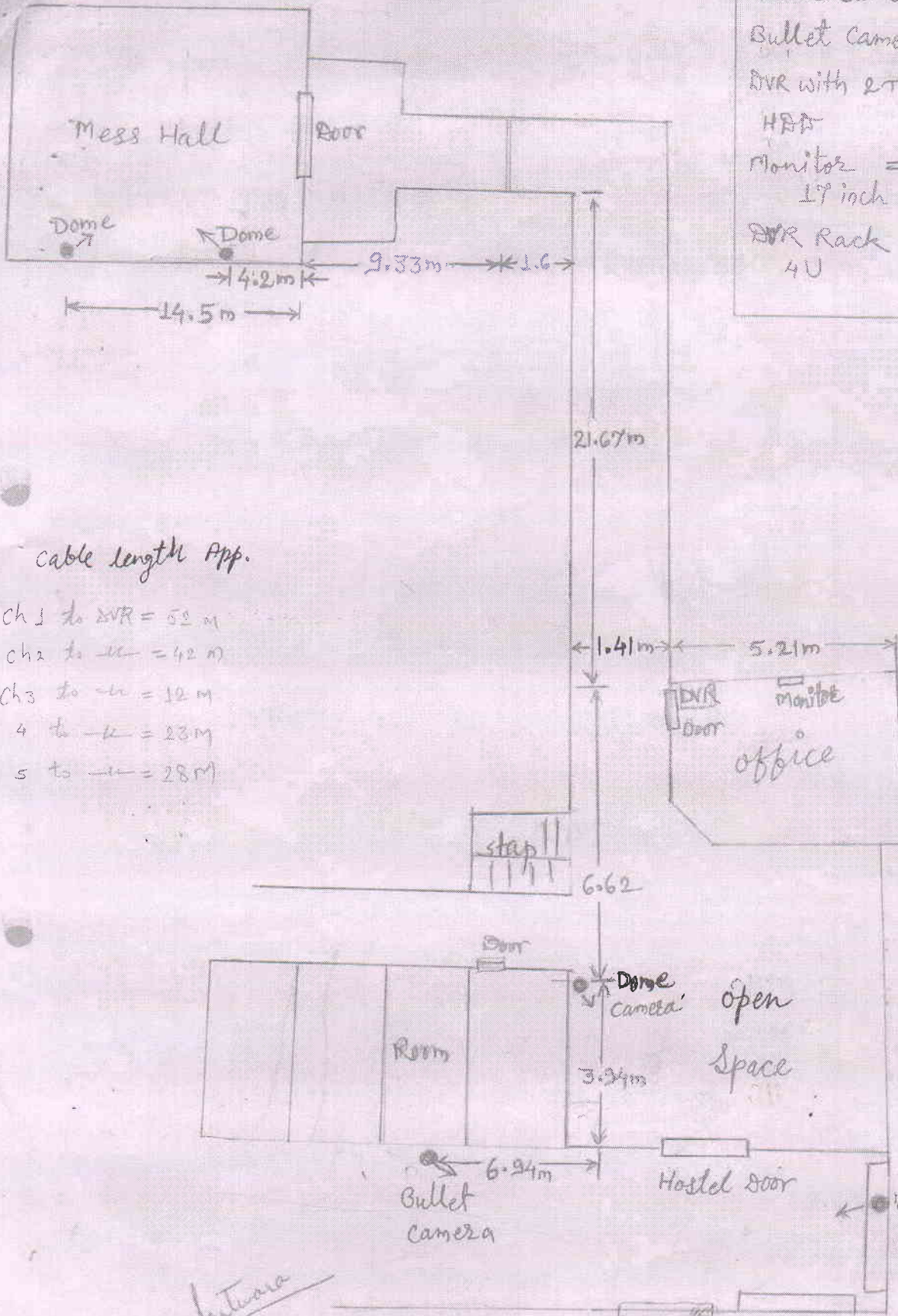
HDD

Monitor = 1 Nos

17 inch

DVR Rack = 1 Nos.

4U



Cable length App.

ch 1 to DVR = 52 m

ch 2 to DVR = 42 m

ch 3 to DVR = 12 m

4 to DVR = 23 m

5 to DVR = 28 m

for signature
Shri. Jignasu
Shri. Jignasu Gid's House
Shri. Jignasu Gid's House
Shri. Jignasu Gid's House
Shri. Jignasu Gid's House
Shri. Jignasu Gid's House
Shri. Jignasu Gid's House
Shri. Jignasu Gid's House
Shri. Jignasu Gid's House
Shri. Jignasu Gid's House

Compound gate

for

Shri
30/8/18

PROJECT
PROPOSED GIRL'S HOSTEL
DR. BABASAHEB AMREDKAR
WADA UNIVERSITY AT AURANGABAD.

MD- 1.20 X 2.10 = 1 NOS
D- 0.90 X 2.10 = 26 NOS
D1- 0.75 X 2.10 = 12 NOS
W- 1.20 X 1.20 = 25 NOS
V- 0.60 X 0.75 = 12 NOS

Fig 91 = view as total

draw as a map
of the hostel building

GROUND FLOOR PLAN

PROP. GR. FL. B/UP AREA = SQ.MT.

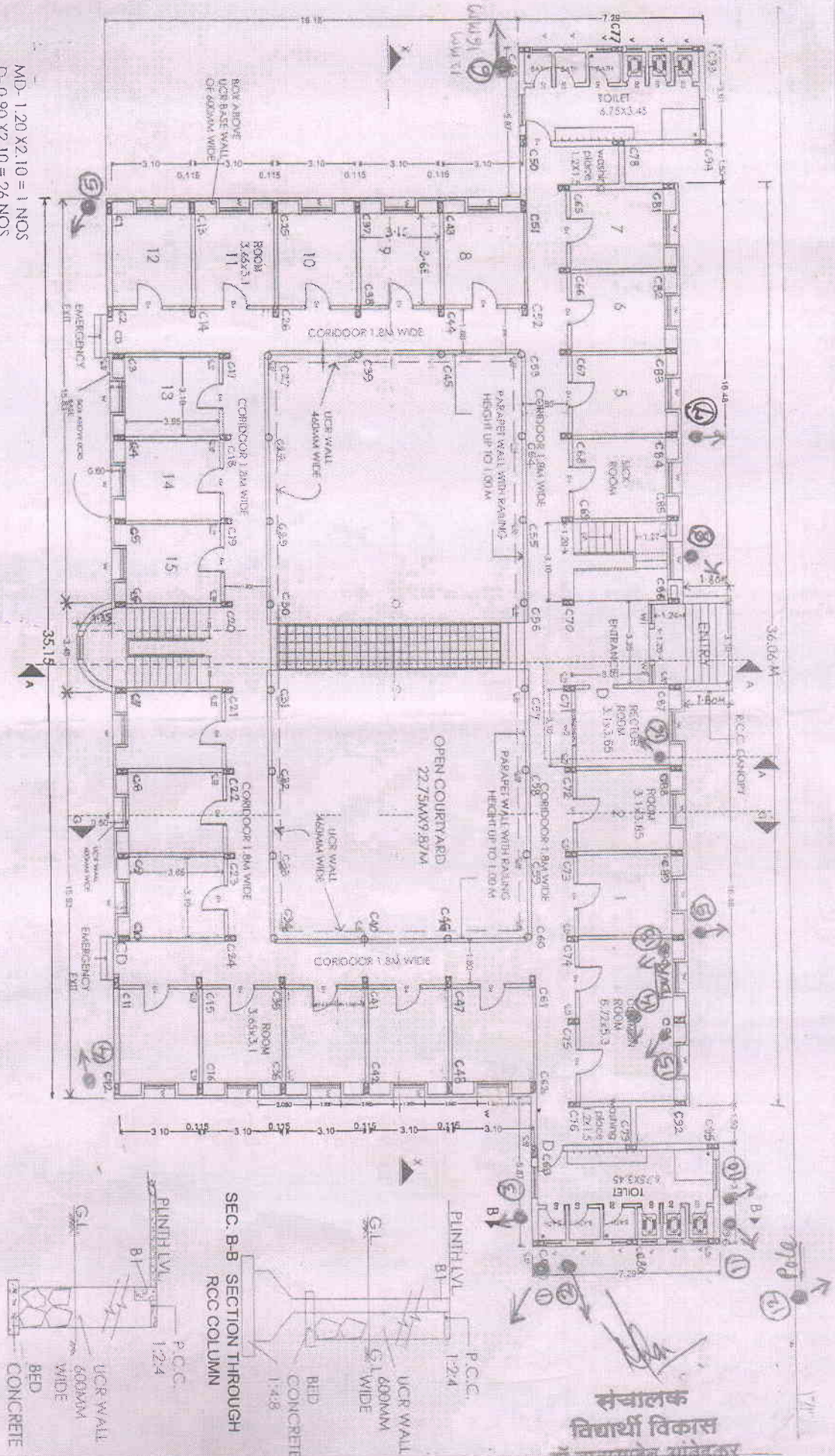
DRAWN BY : ARUN
DRG. NO. UH-13

DT: Friday, August 18, 2006

ARCHITECT

Vijay Sangwkar
SANGWIKAR & ASSOCIATES
Architects, Engineers & Govt. Valuers
Barampasa, Aurangabad - 431005
Phone: +91-240-2352555, +91-240-5821316

D:\CURRENT PROJECT DRG.\UNIVERSITY DS\University 2006\Working Design\ Lodges Hostel



संचालक
विद्यार्थी विकास
डॉ. बाबासाहेब आंबेडकर
मराठवाडा विद्यापीठ, औरंगाबाद.